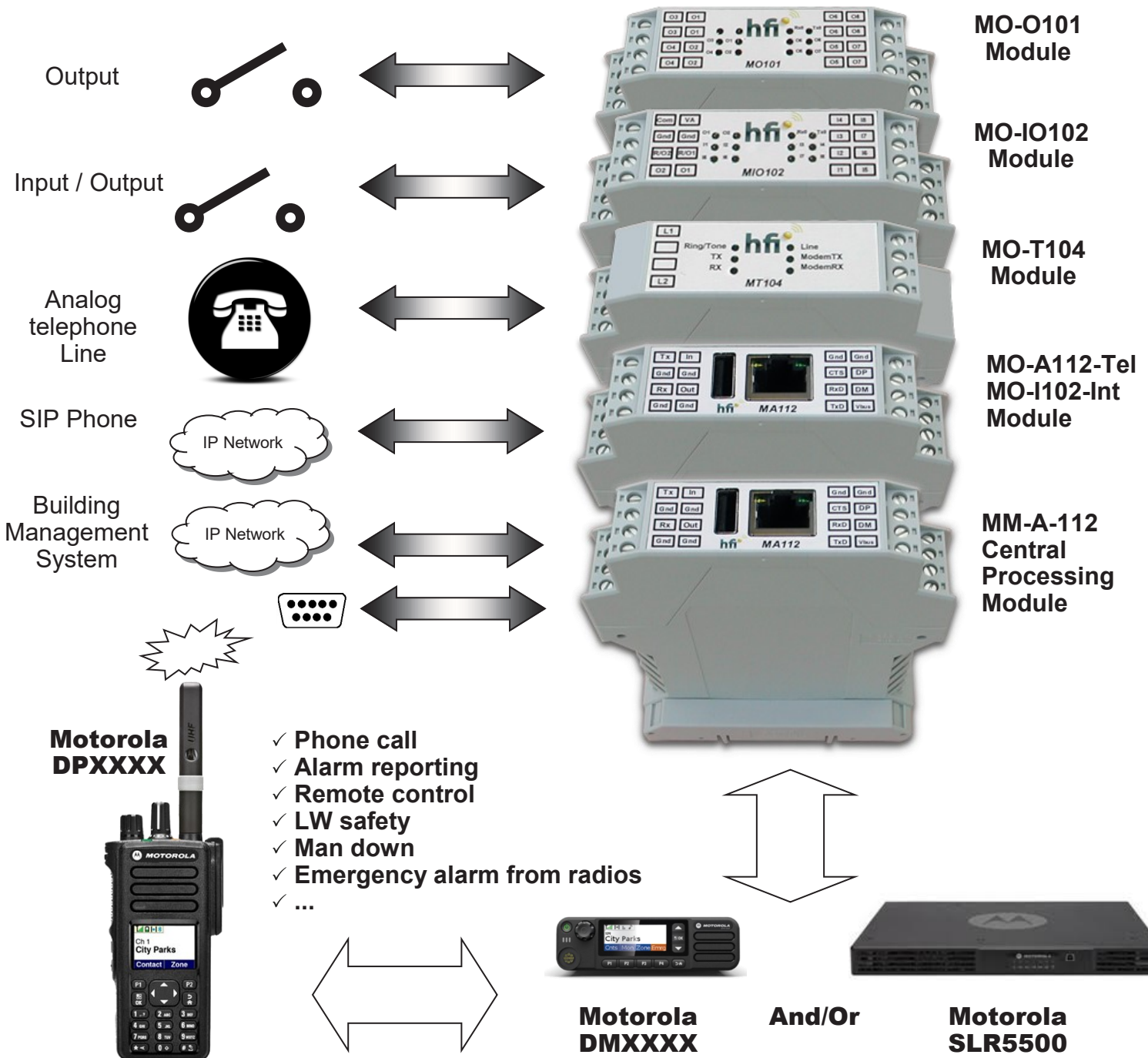


Mikado LT

Fully modular interface system with MOTOTRBO Radio

Build yourself the system you need for your Motorola radio applications:
Alarm reporting, Remote control, phone interconnect, Lone-worker safety, Emergency and man down alarms from radio

Autonomous or with supervisor PC !



Main features

The MM-A112 HFI module is the Central Processing Module of the Mikado-LT radio interface and alarm reporting system.

The MA-112 can be used as a simple IP capable interface for PC server applications (TMS gateway, Indoor/outdoor Localization software interface), or as the core of an autonomous system in combination of other HFI modules to extend functionalities (I/O, Phone, LW safety, man down, emergency alarm from radios ...)

It is easily configurable and firmware can be updated via a built-in web interface.

Mikado-LT is also very easily hardware upgradable: just connect additional phone and/or I/O modules to increase capacity of the system (no need to update software or to return your hardware to factory)

Deployment on single or multiple user sites can be done remotely using internet access if available, or using simple "USB auto-configure key".

This module is based on an ARM processor and Linux embedded OS. The following connections are supported :

- ✓ 10/100M Ethernet to connect LAN for configuration, remote control and connect a host system (Business Management System, protocol : ModBus or ESPA 4.4.4)
- ✓ USB to control a mobile radio station (Motorola MOTOTRBO)
- ✓ Analog I/O to connect MA built-in sound system to mobile radio or repeater
- ✓ USB to update or extend message storage
- ✓ Serial Communication port RS232 to connect a printer, host system (Building Management System, protocol : ModBus or ESPA 4.4.4)

Order information :

- H-MM-A112: Mikado LT ARM Processor Module

Delivered with Accessories :

- power connector ref: 56207
- 4 connectors 4pts ref: 56223

MM-A112



Central Processing
With SIP UA&Proxy
Module
Up to X1

MO-T104



Analog Telephone
Interface Module
Up to X2

MO-IO102



8 input / 2 output
Module
Up to X10

MO-O101



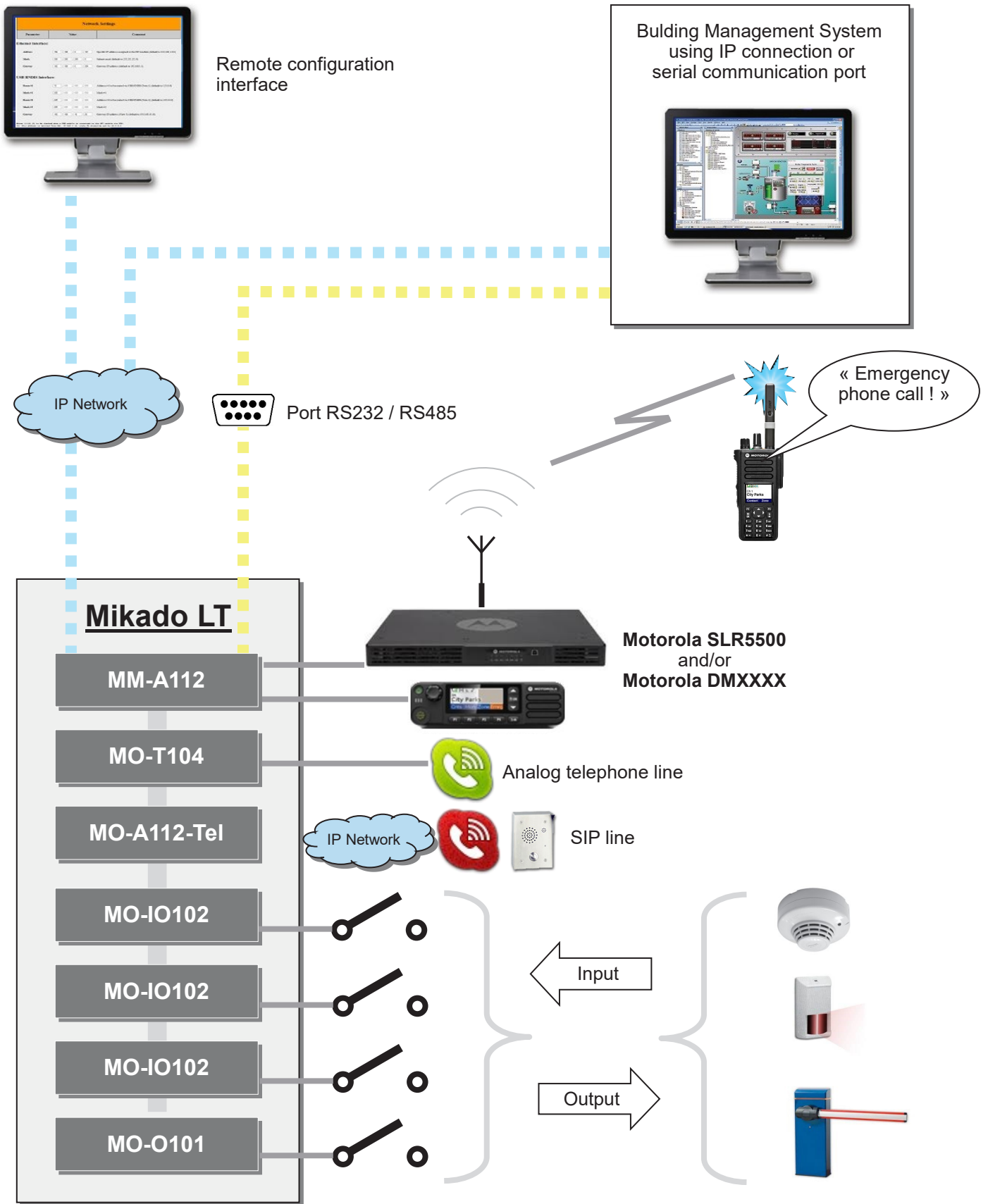
8 output
Module
Up to X10

MO-I102-Int

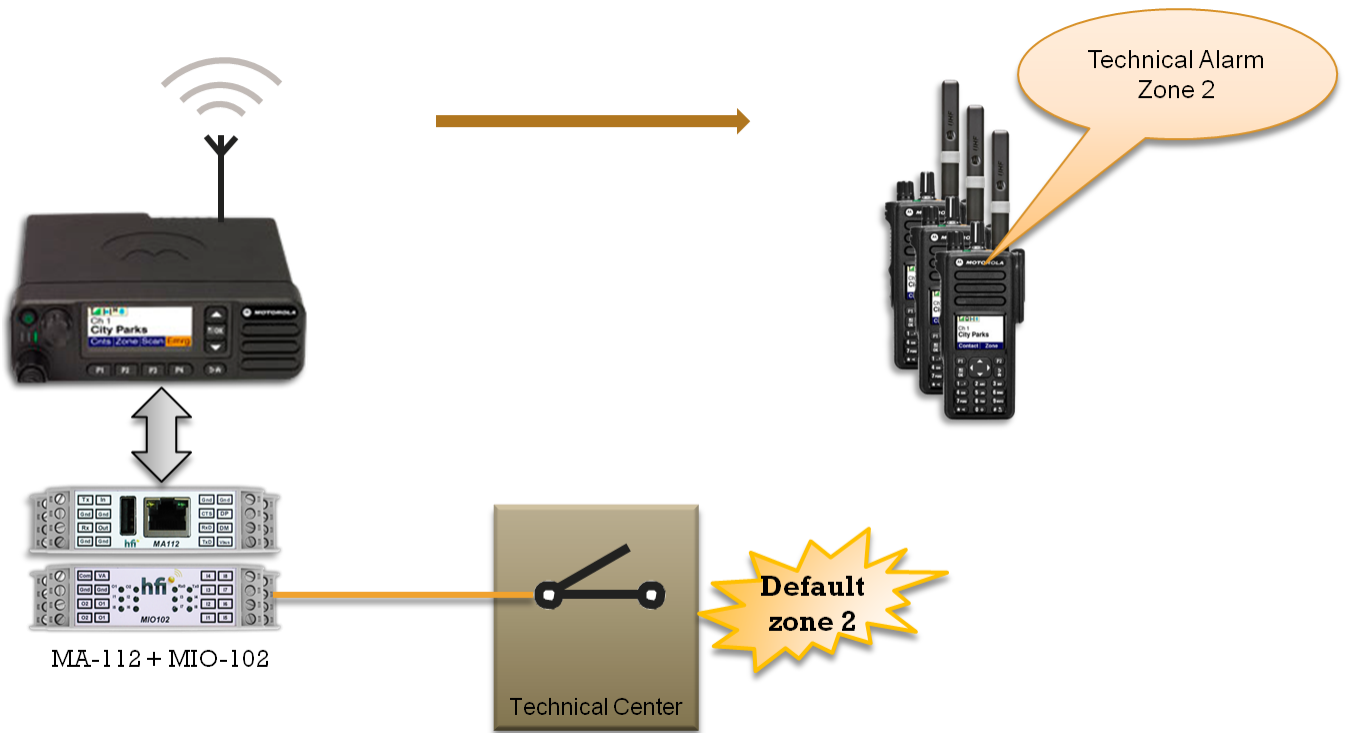


Intercom
Module
Up to X2

Mikado LT Diagram Sample



Application sample

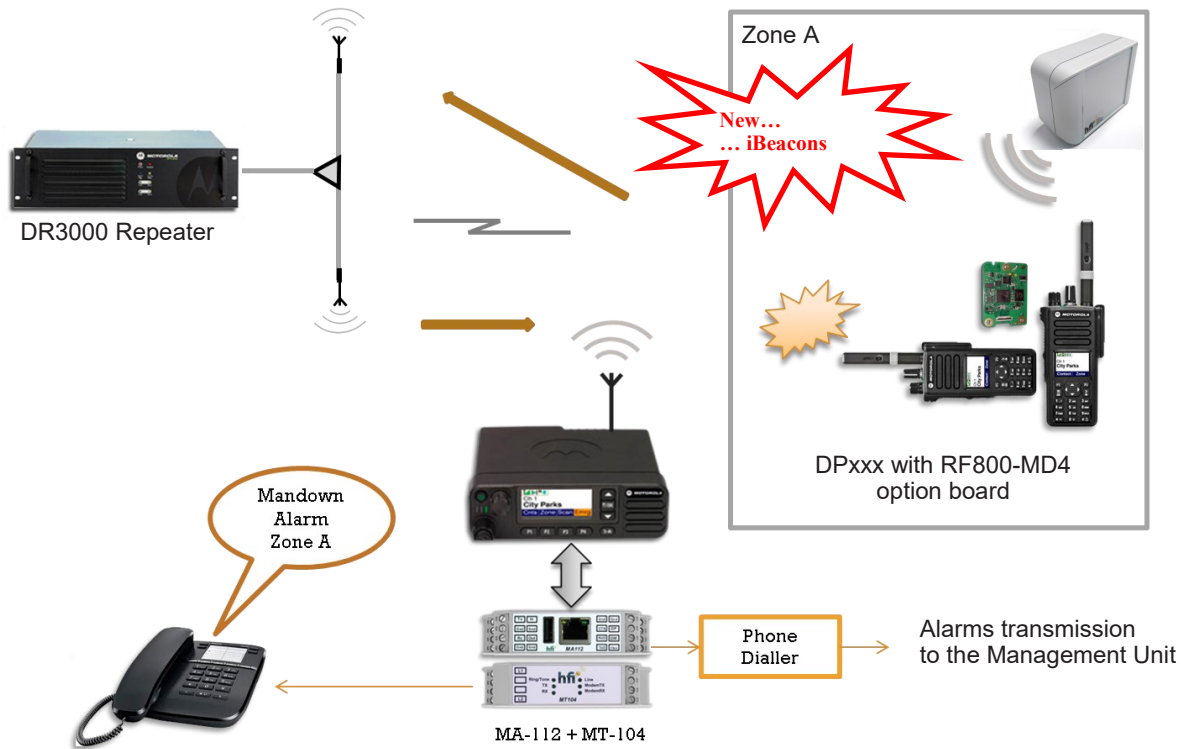


1. Alarms Reporting System with dry contacts

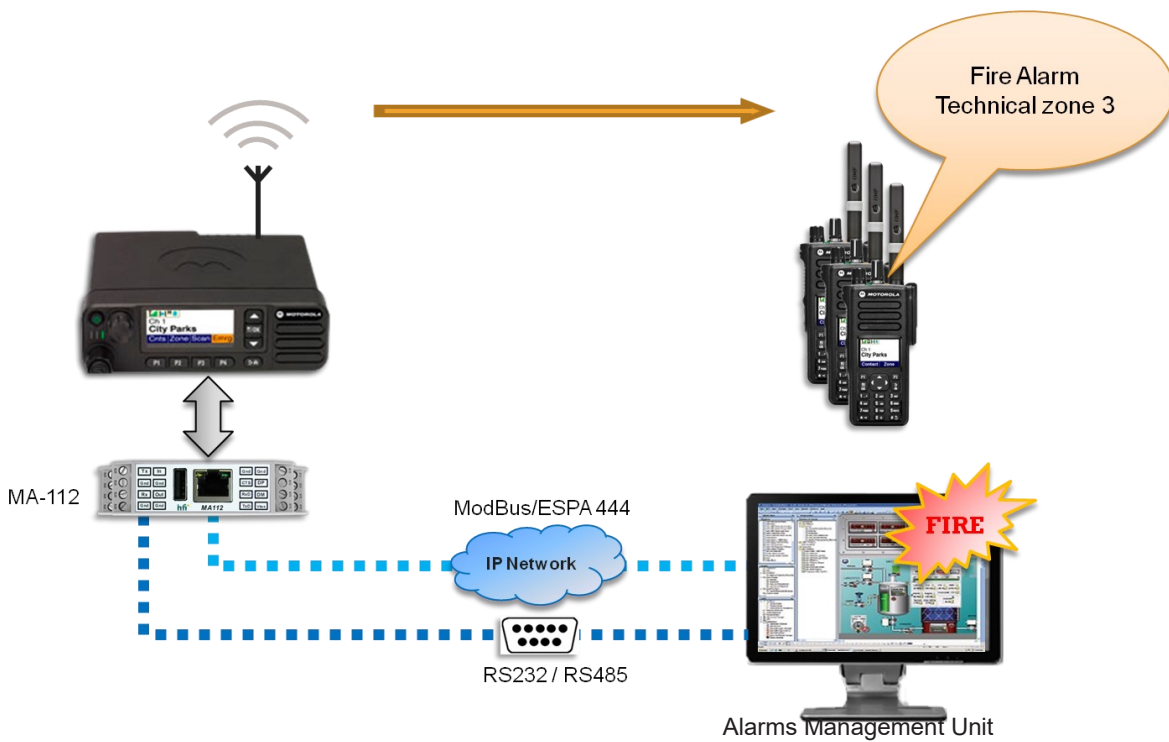


2. Radio/Phone Interconnect

Application sample



3. Lone-worker safety system with Indoor Localization



4. Alarm reporting System

Application settings

The configuration of the Mikado-LT is performed with the built-in web interface. The MA-112 Module must be connected to the LAN network or to a PC to allow the use of an internet browser.

The main menu allows to access several forms to setup the system :

- ✓ Select **Mikado-LT Application** : setup and select Mikado-LT functionalities
- ✓ Select **SIP Phone Application** : setup and select SIP Phone/Intercom application
- ✓ Edit **Network Parameters** : set parameters of Ethernet and USB RNDIS IP networks
- ✓ Edit **Modbus Parameters** : set parameters of Modbus Protocol
- ✓ **History log file** : view, open or download log file (text file)
- ✓ **Update & Backup** : update firmware, voice messages, ... and backup system settings
- ✓ ...

MIKADO LT SIP Phone Settings

| Parameter | Value | Comment |
|-----------|-------|---------|
|-----------|-------|---------|

Accounts

HFI <sip:6000:password@hfi.fr>;outbound="sip:192.168.1.253"

Format : *Displayname <sip:user:password@domain;uri-params>;addr-params*

Example : *HFI <sip:0476031010:password@hfi.fr>*

uri-params:
;transport=

addr-params:
;auth_user=username
;medianat=
;outbound="sip:primary.example.com;transport=tcp"
;ptime=
;regint=3600
;sipnat=
;stunserver=stun:[user:pass]@host[:port]

General Specifications

- Module Size : 115 x 100 x 25 mm
- Module Weight : about 150 g
- Operating Temperature : -10 à + 50° C
- Storage Temperature : - 30 à + 80° C
- Power Supply : 12 V (nominal)
- MA-112 : 100 mA
- MT-104 : 100 mA
- MIO-102 : 100 mA
- MO-101 : 100 mA



33 (0)4 76 03 10 10
www.hfi.fr