

RF800-MD4

LW safety / localization option board for DP4XXX portable radio

The RF800-MD4 is compatible with the range of Motorola Portable Bluetooth DMR radio and the RF800-B indoor localization beacons.

It has been designed to be used through applications such as Lone worker safety with indoor localization system using 868 Mhz radio beacons (ref. RF800-B) and real time Tour Management when used with the CP600-RF tag reader.

Localization Function:

When the portable radio with an option board RF800-MD4, pass into the coverage area of a RF800-B beacon, the identification code of the beacon and the portable radio is transmitted in real time on the radio network. This event can be transmitted either permanently (tracking mode) or only in case of LW alarm.

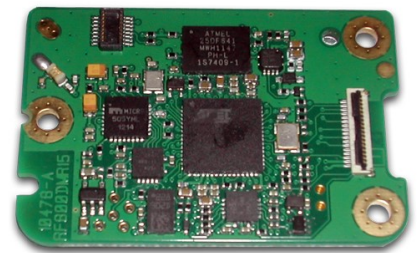
LW Function :

Its electronic architecture with an accelerometer which can detect the tilt angle and / or the stillness, depending on its configuration mode. A delay of pre-alarm beep to alert the user allows him to cancel the alarm process before the activation of the emergency mode of the radio.

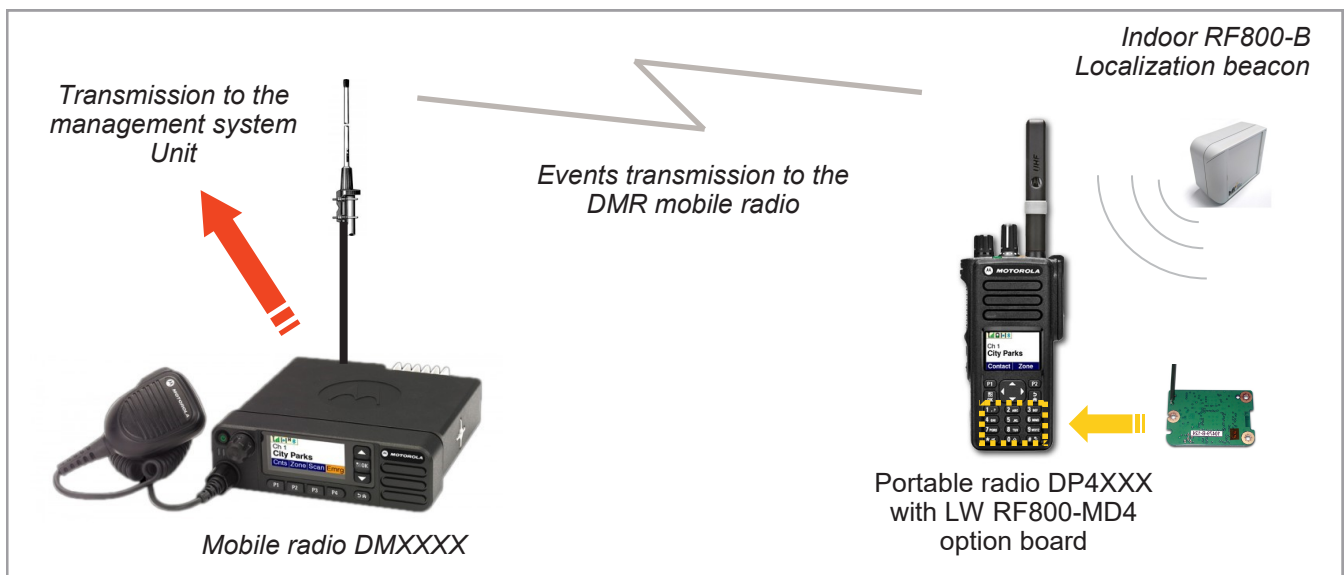
The Setup interface* makes easy the customization of following settings:

- Mode choice : loss of verticality and / or stillness
- Time period for the pre-alarm sound
- Duration of the pre-alarm sound before activation of the portable emergency mode
- Angle of inclination in man-down fashion
- Threshold of immobility in the stillness mode

* The Motorola programming cable is required

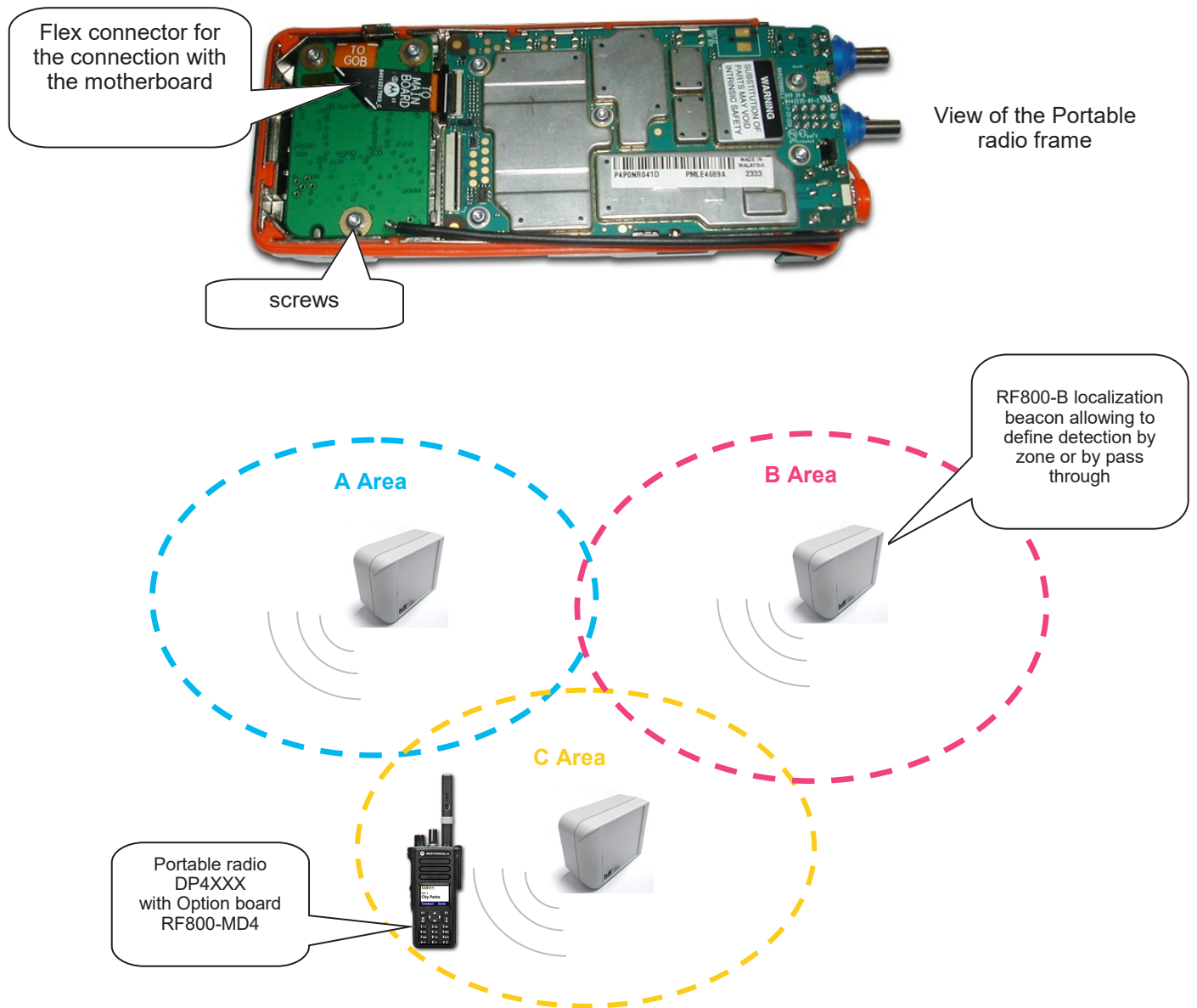


Option Board LW
RF800-MD4



Technical specifications

The RF800-MD4 option board is delivered with 3 screws and a Flex connector allowing, easily, to integrate it to the motherboard of the portable radio.



Technical specifications

- Size: 44 x 30 x 2 mm
- Weight : 6 g
- Antenna 868 Mhz
- Operating temperature: -10 à + 50° C
- Storage Temperature: - 30 à + 80° C
- Power supply: 35 mA