

## Lone Worker Safety / Localization system / RFID

The BlueLoc device is compatible with the range of Motorola Portable Bluetooth DMR radio and the RF800-B or RF800-BP indoor localization beacons.

It has been designed to be used through applications such as Lone Worker Safety with indoor localization system using 868 Mhz radio beacons (ref. RF800-BP) and real time Tour Management with its RFID tag reader (optional). Its low weight allows it to be totally discreet and without particular constraint for the user.

### LW Function :

Its electronic architecture with an accelerometer which can detect the tilt angle and / or the stillness, depending on its configuration mode. A delay of pre-alarm beep to alert the user allows him to cancel the alarm process before the activation of the emergency mode of the radio.

### Localization Function :

When the portable radio, paired with a BlueLoc, pass into the coverage area of a RF800-B beacon, the identification code of the beacon and the portable are transmitted in real time on the radio network. This event can be transmitted either permanently ( tracking mode ) or only in case of LW alarm.

### RFID tag reader Function :

BlueLoc can read RFID tag and can be used in a guard tour.

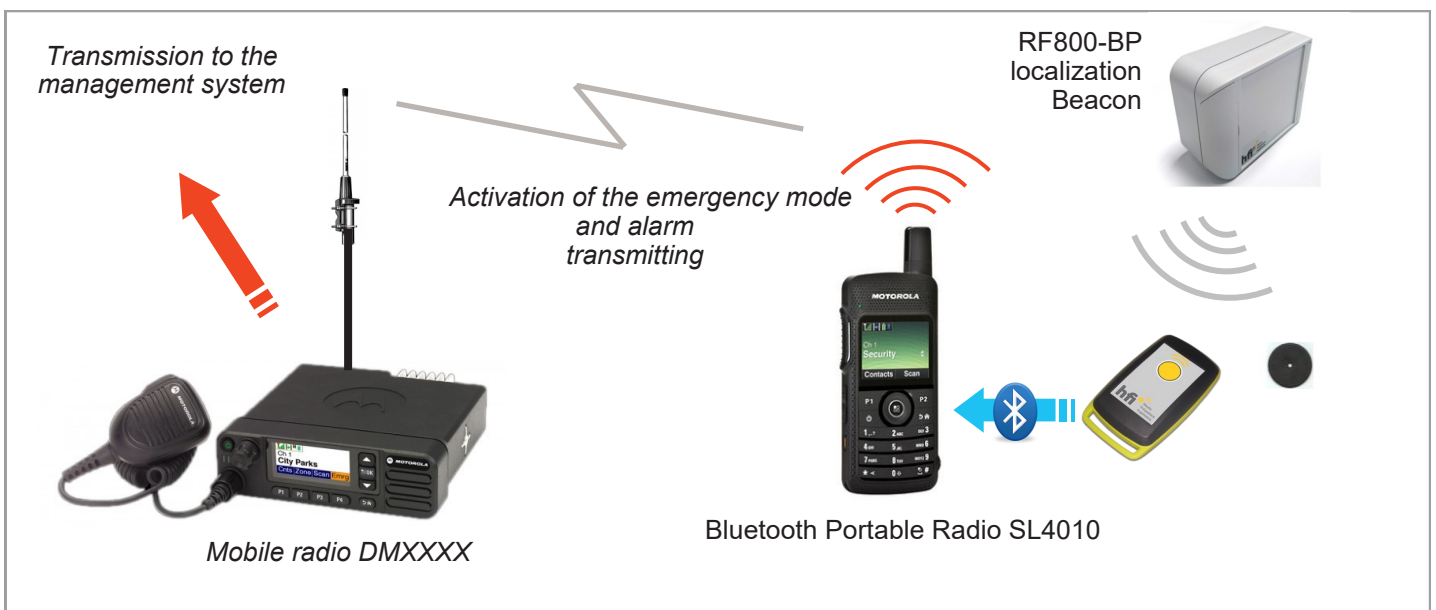
The Setup interface \* makes easy the customization of following settings:

- Mode choice : loss of verticality and / or stillness
- Time period for the pre-alarm sound
- Duration of the pre-alarm sound before activation of the portable emergency mode
- Angle of inclination in man-down fashion
- Threshold of immobility in the stillness mode

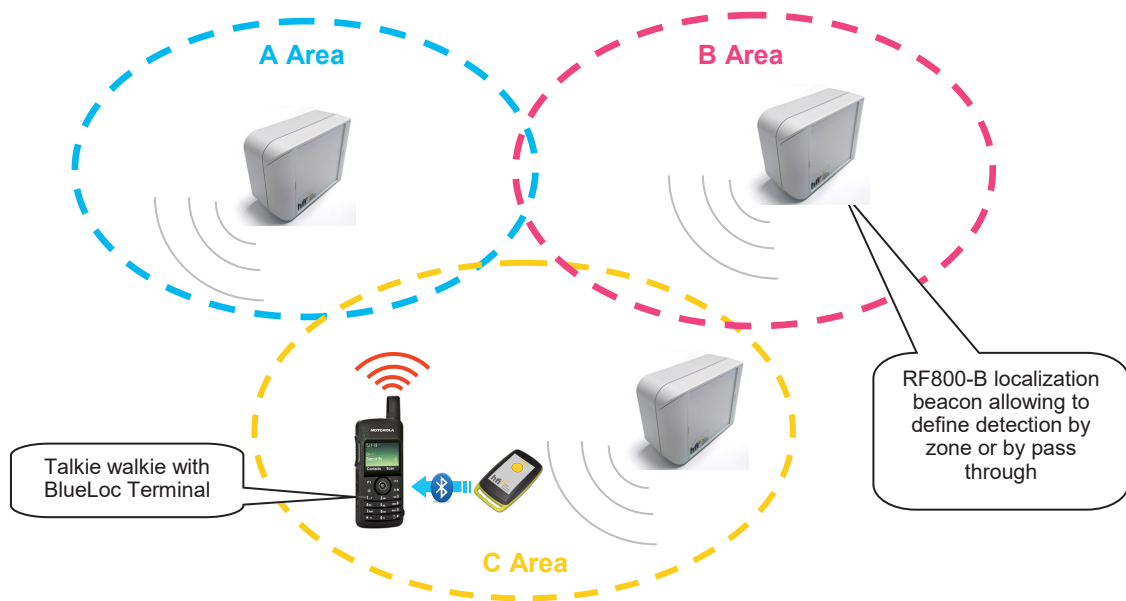
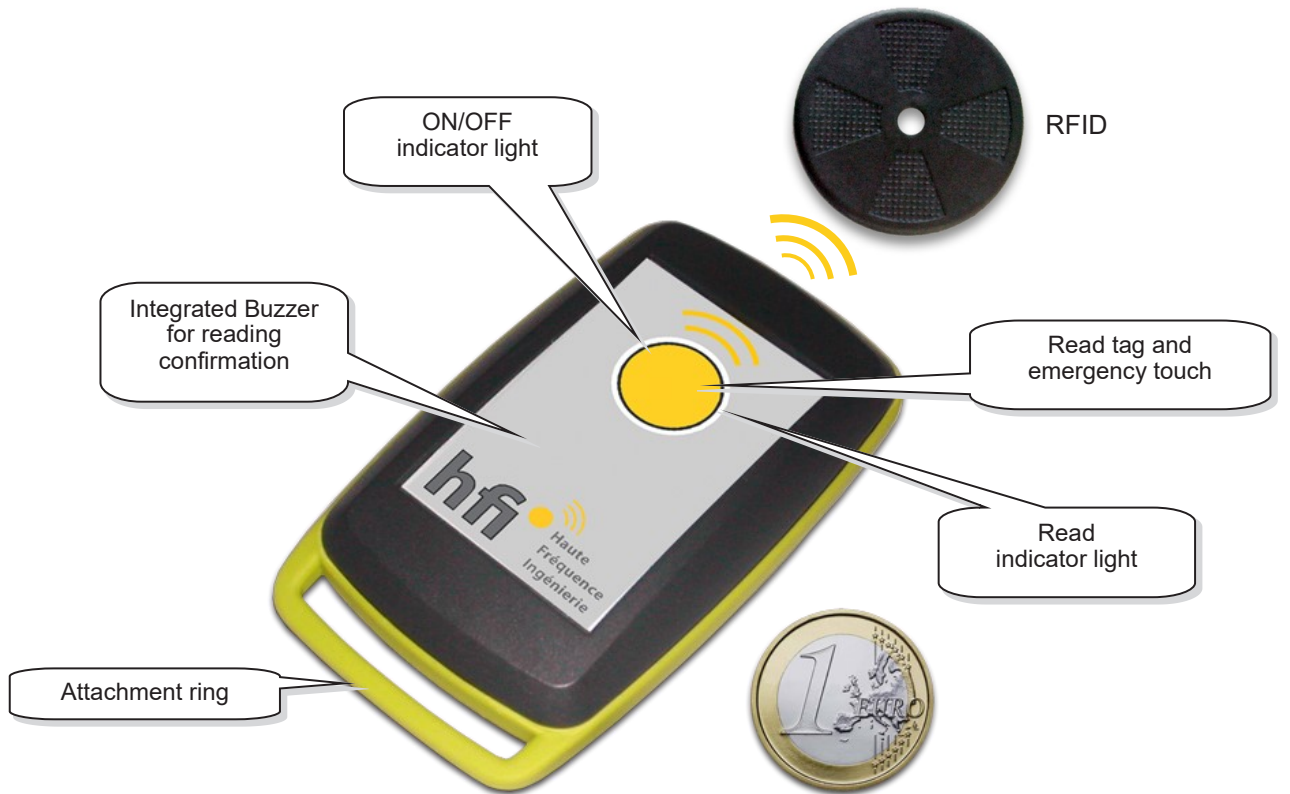
\* Programming via Bluetooth link



## LW LOCALIZATION RFID READER



## Technical Specifications



Size : 7,8 cm x 4,8 cm x 2 cm

Weight : 65 g

Power Supply : Battery charging by USB

Operating Temperature : -10°C / 70°C

The **BlueLoc** reader **BlueLocV** version allows automatic reading of RFID tags without pressing the button, by simply positioning the reader vertically.



### 1-2-3 and the tag is read without further operator action ...

1- Put the player upright

—————> Enable the "read" mode

2- A BEEP is issued and the red LED flashes

—————> The reader is in "RFID reading" mode for 7 seconds

3- Three BIPs indicate the detection and reading of the RFID tag nearby

—————> The RFID tag is read and transmitted to the radio portable in BlueTooth